

Circular in
BEWI

BEWI

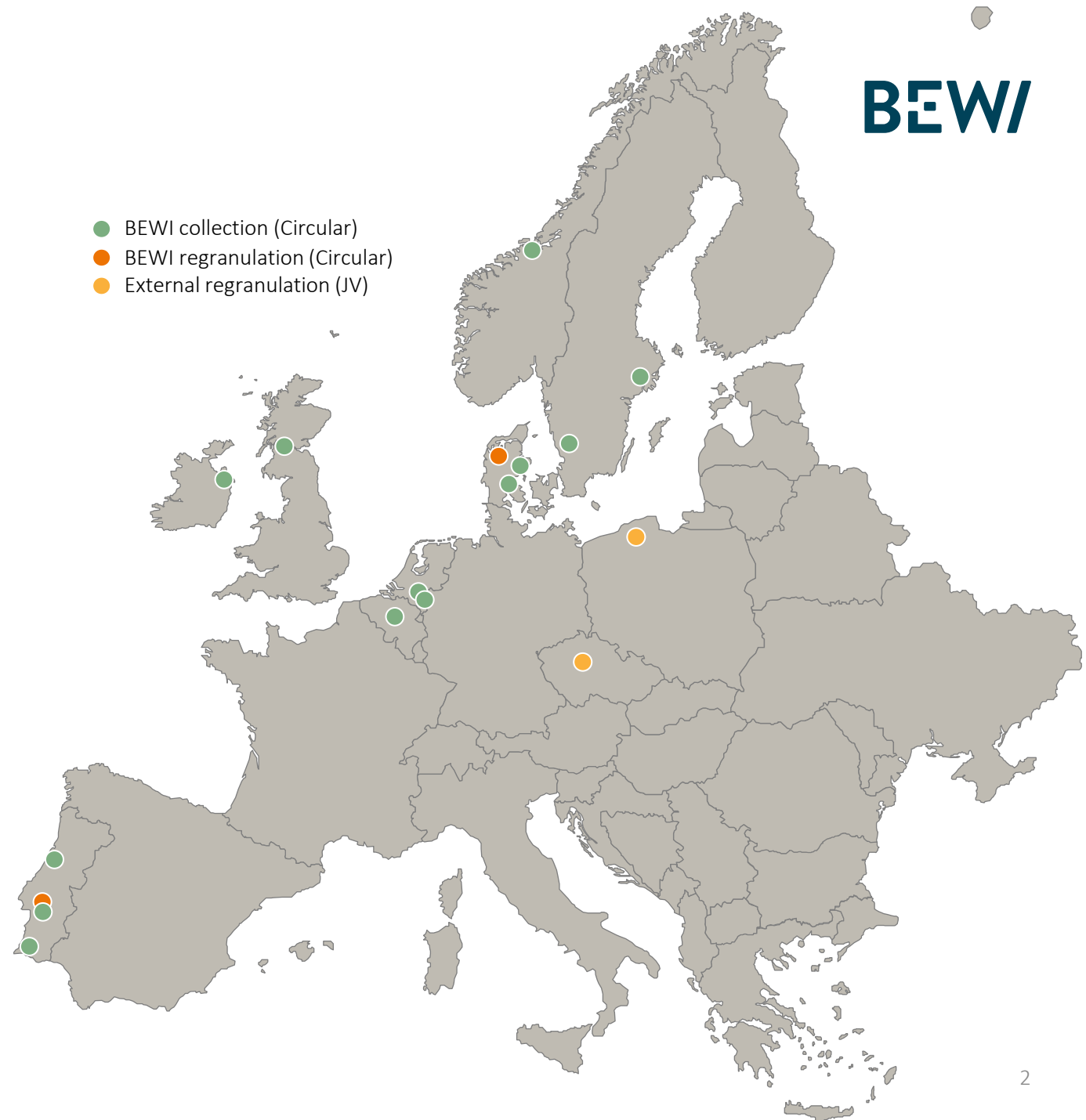


BEWI Circular



Background and footprint

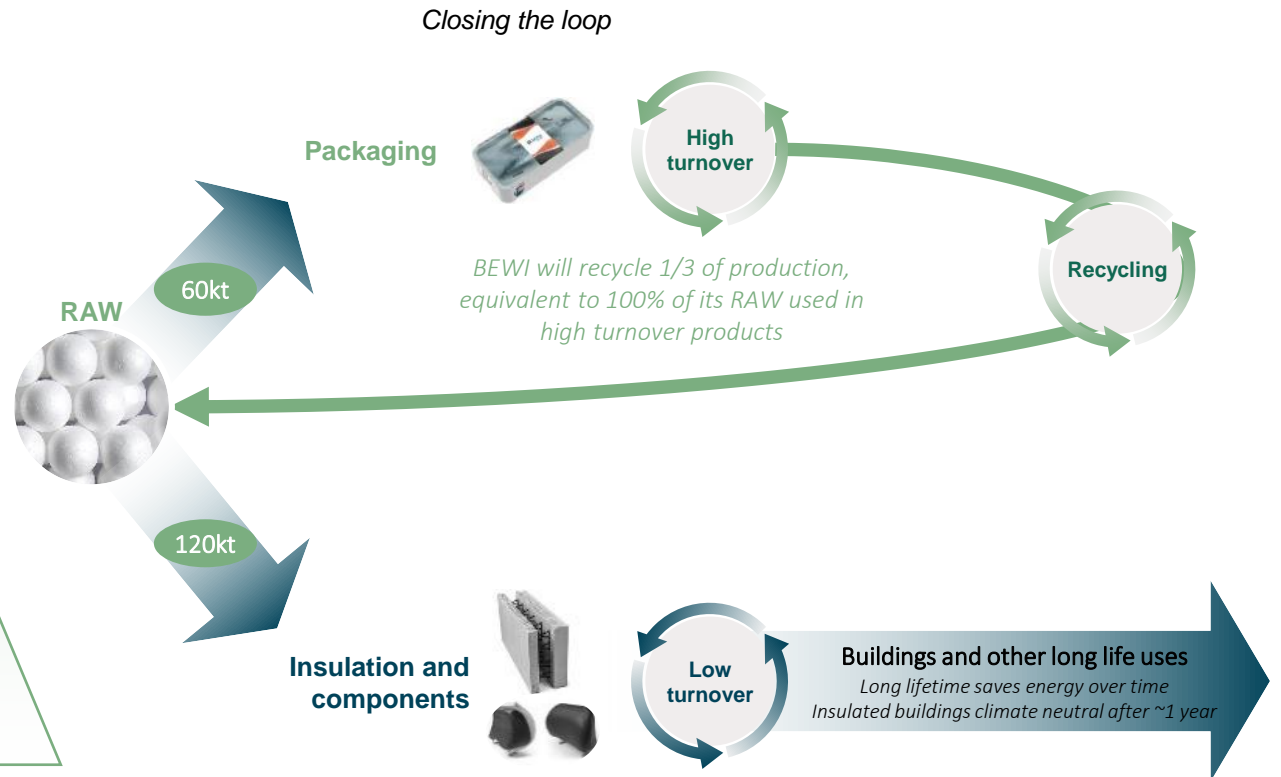
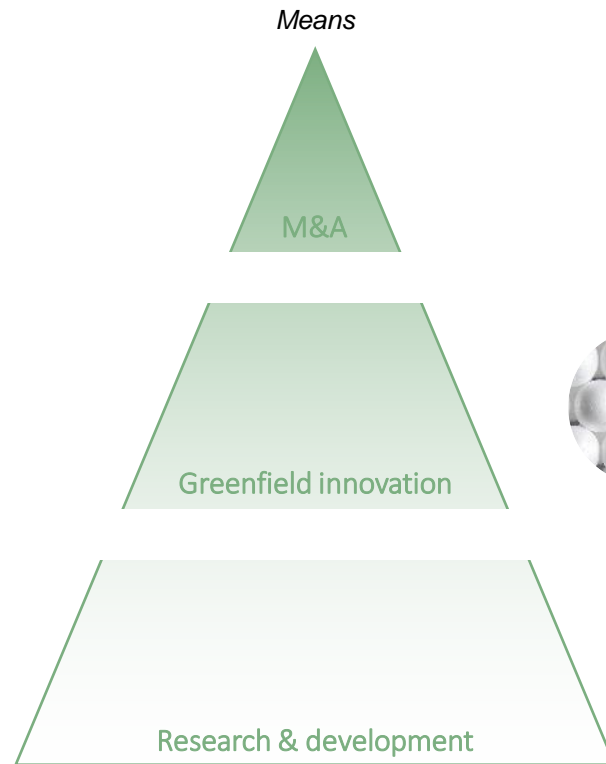
- Launched 2018 as part of sustainability strategy to contribute and lead change towards circular economy
- Responsible for collection and recycling of EPS in BEWI
- Medium term target collection and recycling of **60 kt** EPS



Annual recycling target of 60,000 tons to secure full circularity



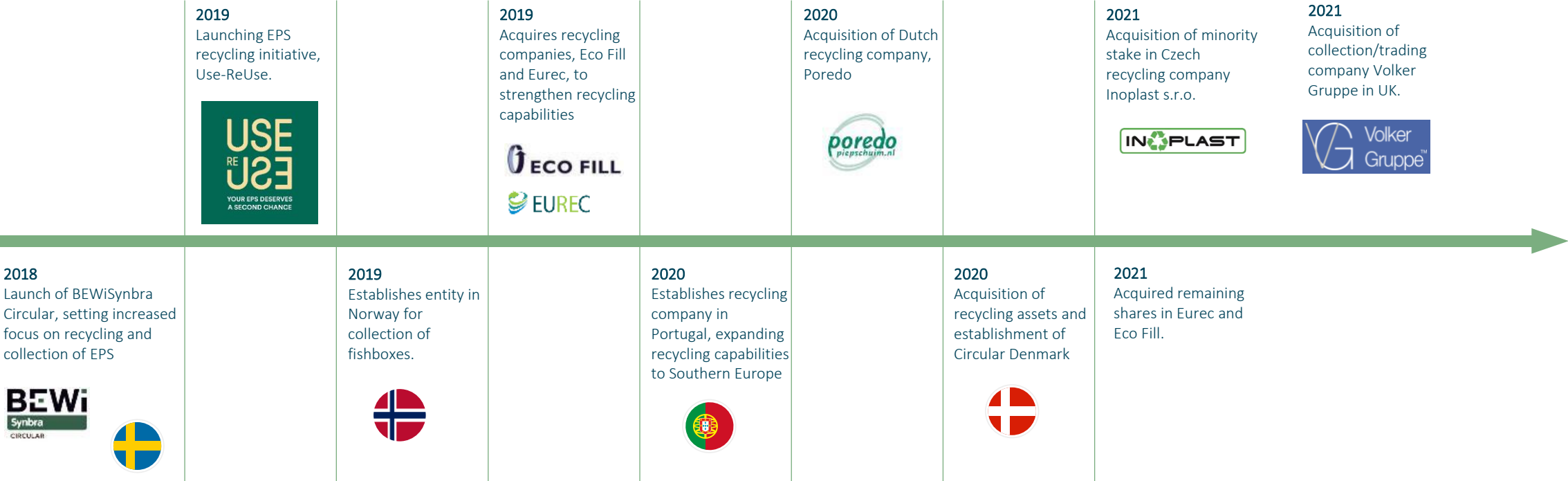
- Rationale**
- Increasing environmental awareness
 - EU targets climate neutral production
 - Economies of scale within recycling
 - First-mover ecosystem advantage
 - First-mover consolidation advantage
 - Potential tax and other legislation



Timeline business unit Circular

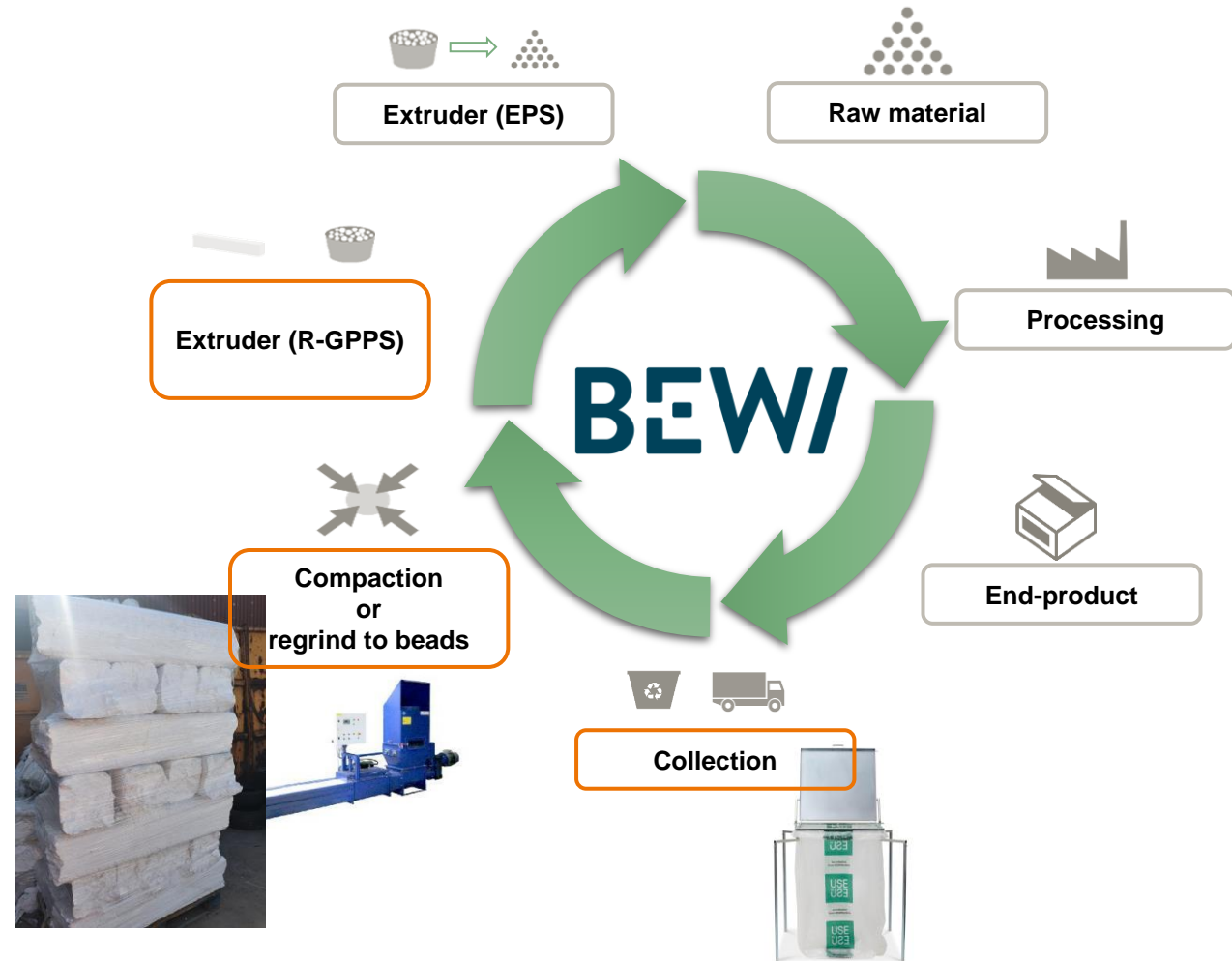


Key milestones



What we do

- Collection EPS and other materials
- Compacting
- Reprocessing
- Logistics
- Services
- Machines



Collection

- Municipal collection point



Insamling & Återvinning
Cellplast & Wellpapp

BEWI

bewi.com | circular@bewi.com
0706 - 15 29 75

A photograph of a white BEWI truck with a green recycling logo on the side, driving on a road. The truck has "BEWI" and "circular" written on the front and side.

- Fish processor or fish market



- Wholesale/Distribution center



- Building/Construction site



Reprocessing

- regranulate



BEWI

- reBead



GreenLine

100% recycled

- 75% lower CO₂ emissions than virgin which is equivalent to 1.77 kg CO₂ per kg produced product
- Unchanged packaging properties
- Almost all products can be ordered based on GreenLine
- To come: Flame retardant grade and food approval

BEWI



BEWI
for a better everyday